

## **Instructions for updating the PCI database version 11.0 and 12.0a to make it compatible with the new dataset 5.3.3**

### **Introduction**

The new BCIS-CCAD PCI dataset (version 5.3.3) includes an extra date and time field (arrival date/time at PCI hospital). If you have been using the database that I wrote, then you will already have been collecting these data, but as it was not part of the old dataset version 5.2.3, it was not being exported to CCAD.

All you need to do to make the database compatible with the new dataset is update 2 of the files involved in the export routine. This means that a slightly different csv file will be generated that includes the extra field as an additional column at the end of each row, making each row 104 instead of 103 columns long.

CCAD are now able to accept both the old export file (103 long) and the new one (104 long), but from 1st June 2008, they will only accept the new version.

As you have been collecting these data all along, you can populate the CCAD servers with this extra field from your existing records. Once you have updated the export routine, simply create a csv file of your existing records and upload it to CCAD. You will not get duplicates in CCAD provided that the data in the following 3 fields have not been changed: i) date/time of the procedure, ii) the patient's local hospital number, and iii) the hospital code.

### **Instructions to update**

These instructions apply to both database version 11.0 and 12.0a

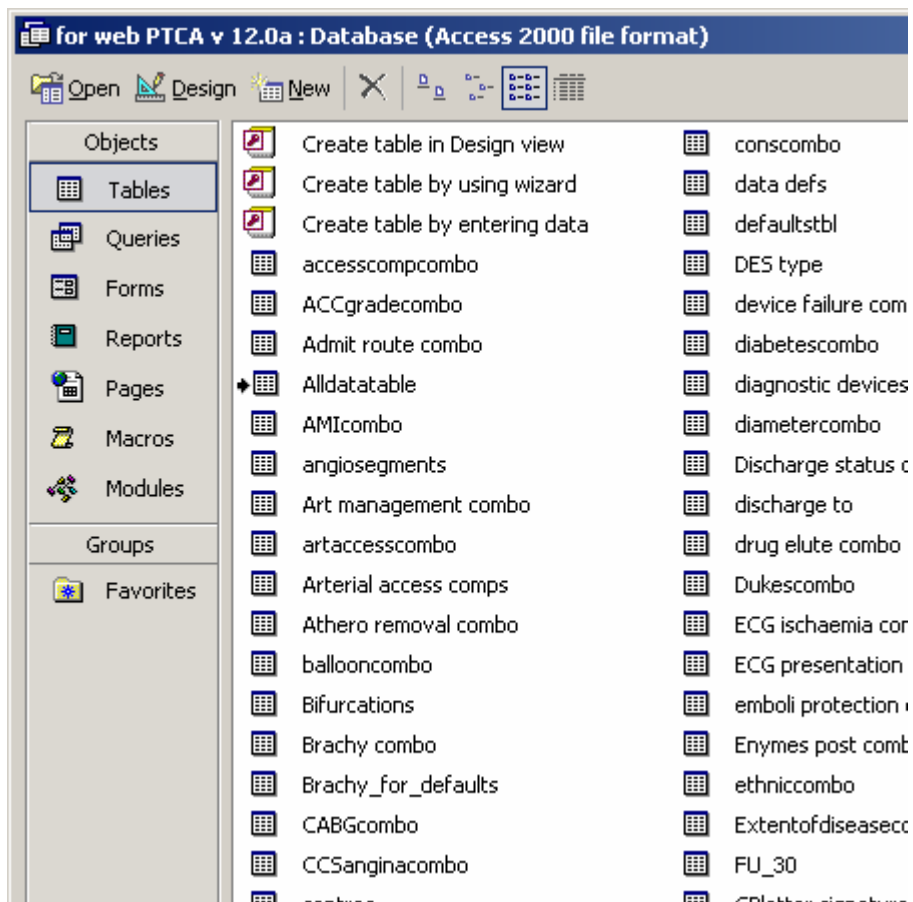
You need to replace 2 existing files in the database with the updated versions. One is a form called 'Export to CSV file', and the other a query called 'CCAD\_export\_base1'

The new versions of these are contained in the database named '533update\_carcass', which you can download from the web site. This contains only those 2 files, and so doesn't function as a database itself, but simply acts as the donor for the new files.

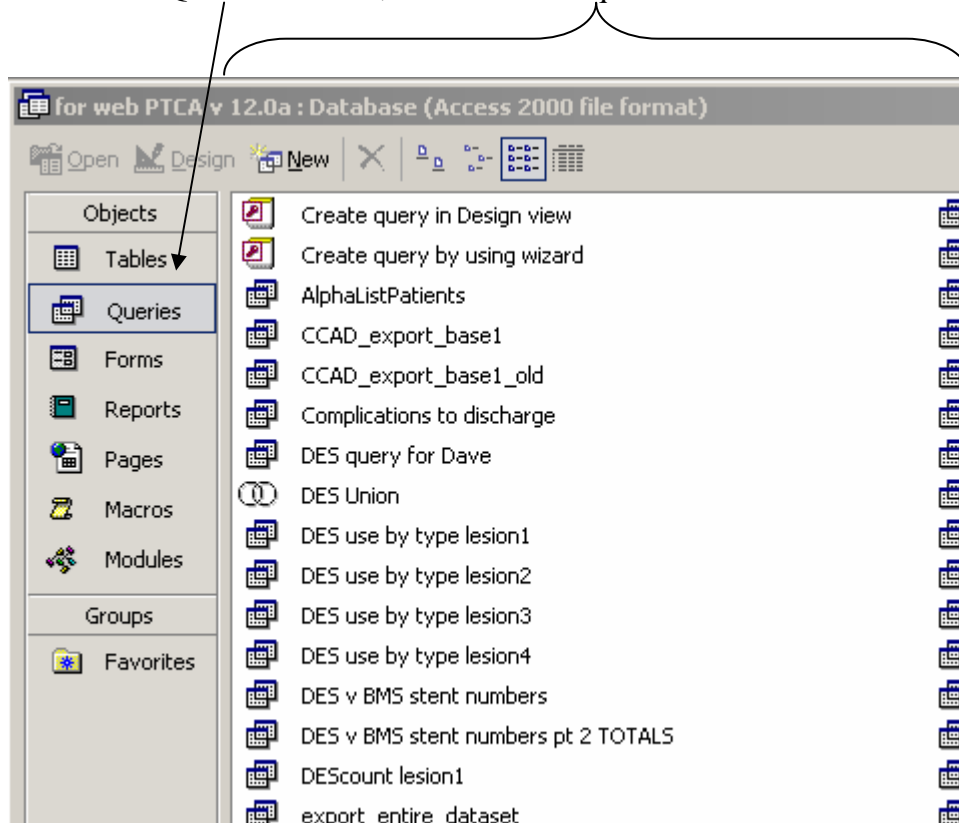
The steps are as follows:

1. Make a backup your current database so you can restore it in case you have a problem.
2. Download the database called '533update\_carcass' and put it somewhere you can find it again – such as on the desktop or in the 'My Documents' folder.
3. Open the database you wish to update in edit mode by doing the following:
  - 3.1 click once on database icon to highlight it
  - 3.2 hold down shift key, and while continuing to hold
  - 3.3 Double click database icon

This should open the insides of the database which looks like this:

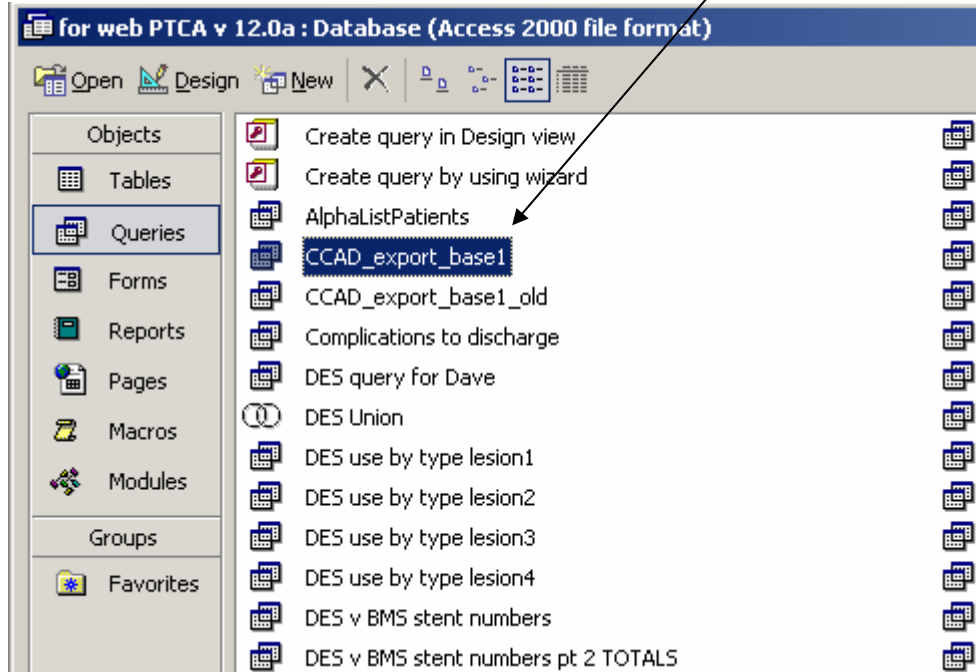


4. Click the Queries tab once, to show all the queries:



5. Rename the file you are about to replace, which is called 'CCAD\_export\_base1' as follows:

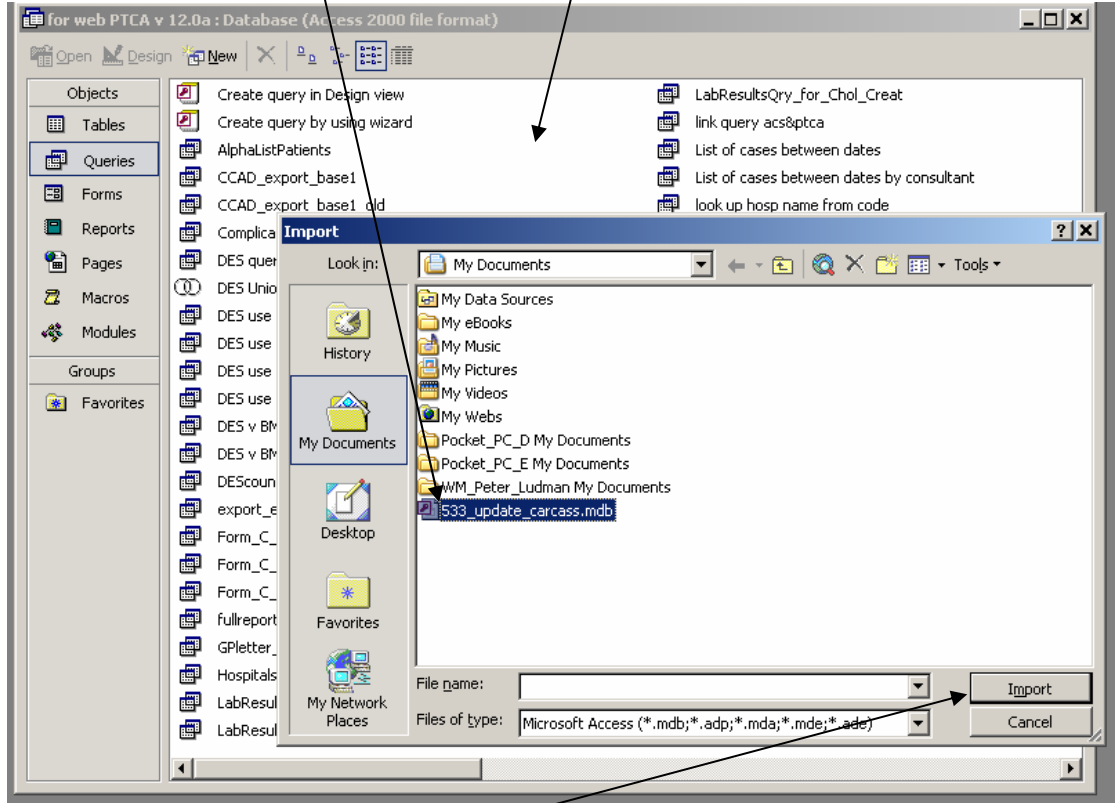
- 5.1 Right click on the file called "CCAD\_export\_base1"
- 5.2 Select 'rename' from the drop down menu
- 5.3 call it something like "OLD"



6. Now you will import the new query:

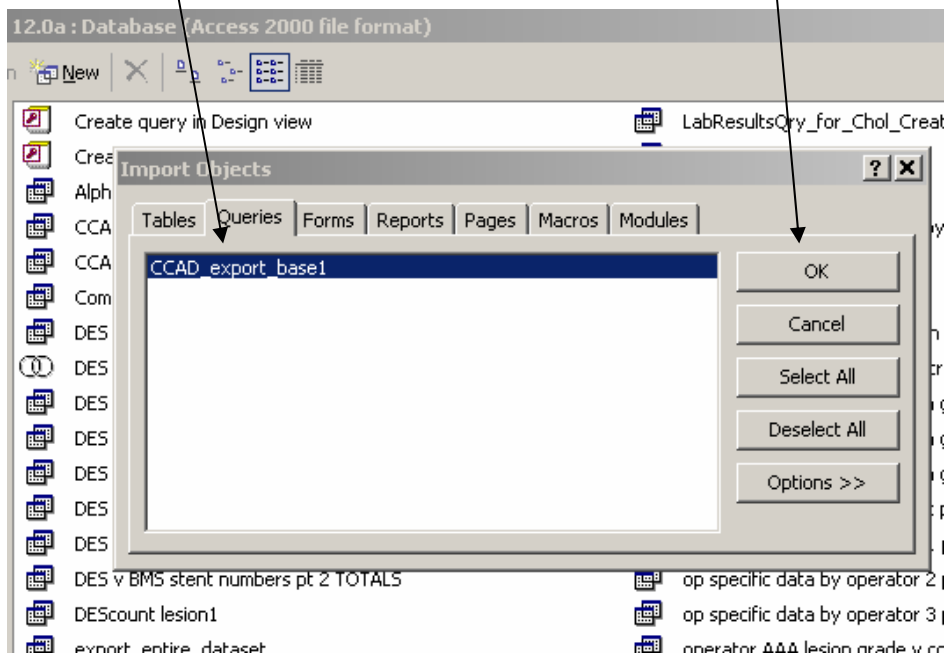
6.1 Right click in any blank part of the queries window, and from the menu that pops up select "Import"

6.2 Use the file select dialogue to find the database that you have downloaded called '533update\_carcass'



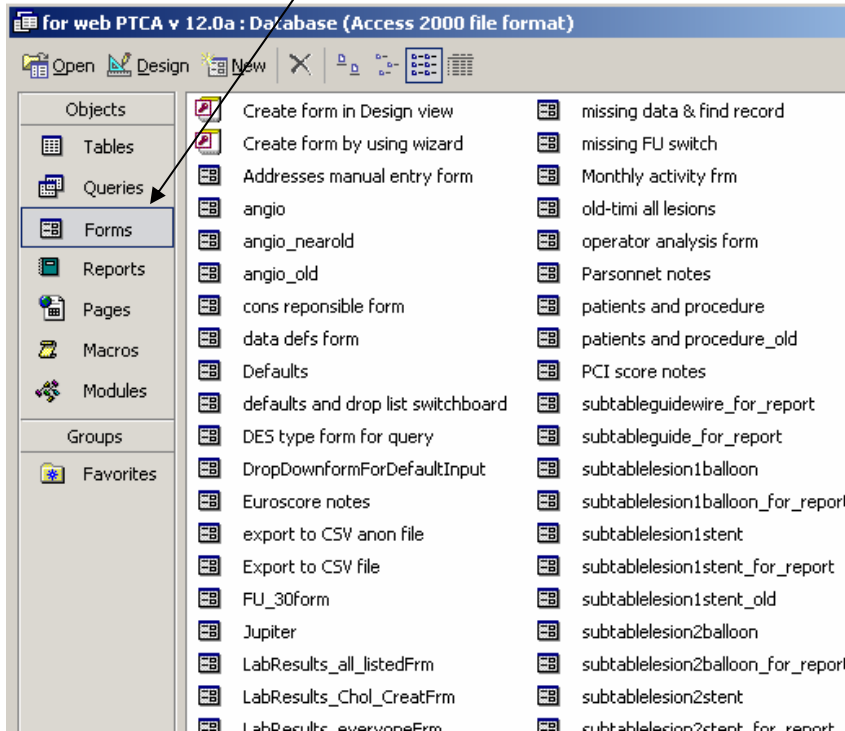
6.3 click 'Import'

6.4 click once to highlight 'CCAD\_export\_base1', and click OK



7. Now you need to update the form, using the same principles as above:

7.1 Click the Forms tab once, to show all the forms

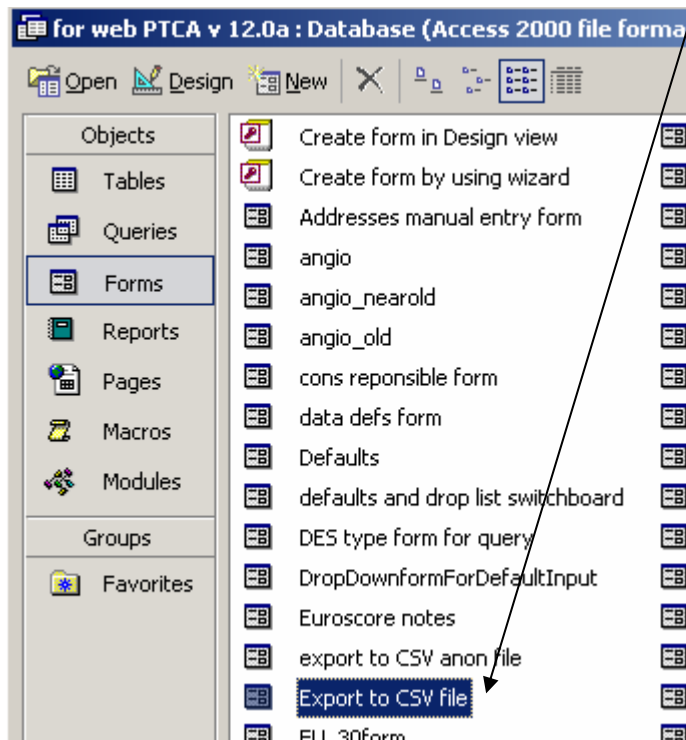


8. Rename the file you are about to replace, which is called 'Export to CSV file' as follows:

8.1 Right click on the file called "Export to CSV file"

8.2 Select 'rename' from the drop down menu

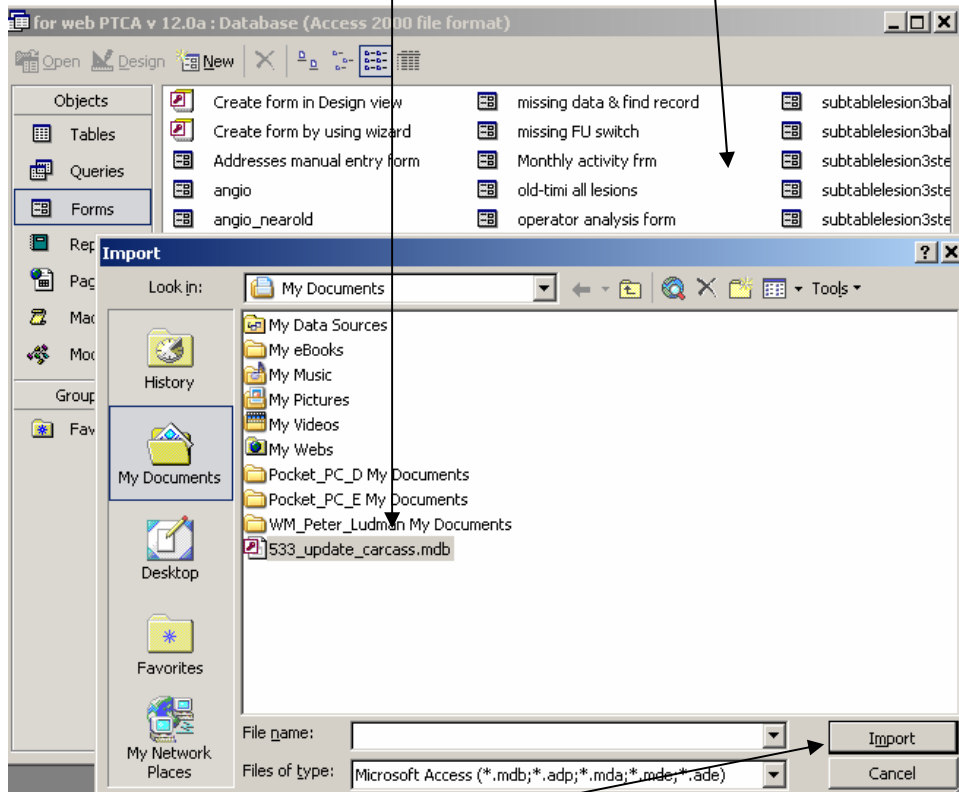
8.3 call it something like "OLD"



9. Now you will import the new query:

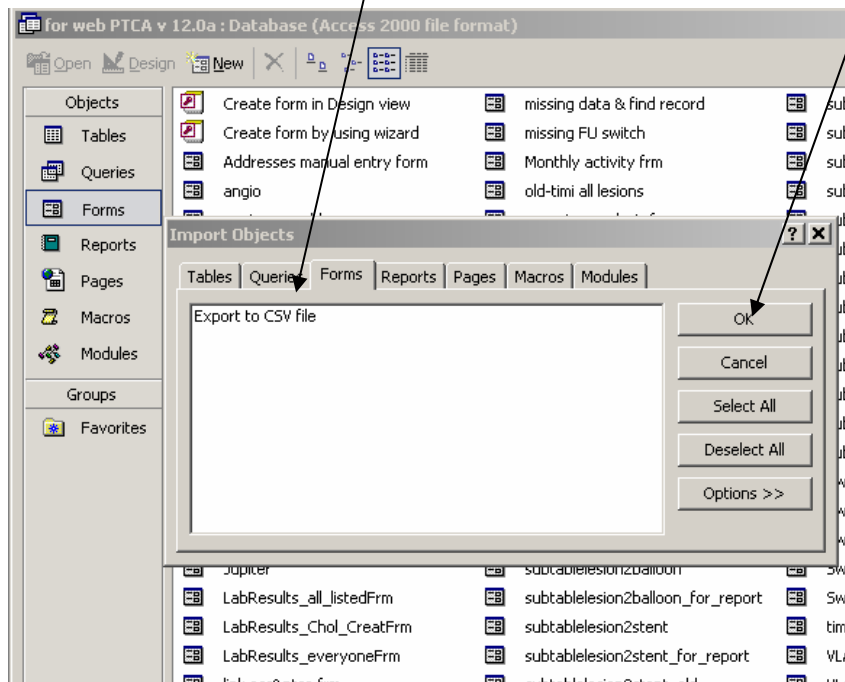
9.1 Right click in a blank part of the forms window, and from the menu that pops up select "Import"

9.2 Use the file select dialogue to find the database that you have downloaded called '533update\_carcass'



9.3 click 'Import'

9.4 click once to highlight 'Export to CSV file' and click OK



10. Success! You have now updated the form and the query. Close down the database.

11. When you re-open the database, it should function as usual, but when you click to create a csv file for export to CCAD, you will see a new form:

You can test it by clicking to generate an export file, and then opening this file with excel (you will recall it can be found in the temp directory of your C drive). The last column (cz) is the 104<sup>th</sup> and contains the date/ time of admission to the PCI hospital.

Best wishes

Peter Ludman