

Bug fix: Database version 12.0 and 12.0a

I have discovered that Database 12.0 has a bug that means it fails to accurately export the vessel types treated to the csv file for CCAD export.

In version 12.0a this has been fixed. If you have not started using version 12.0, then just use version 12.0a instead.

If you using version 10.0 or version 11.0, this is fine as this problem is not present in these versions

Only if you are already using version 12.0 do you need to do anything. If you are using 12.0 then there are two things that need to be done to correct this problem:

1. Replace the 'Form' called 'patient and procedure' in 12.0 with the one in 12.0a.
see below (1.1 to 1.8)- all new procedures entered will be correctly classified.
2. Update the procedures that are already in your database, by running an update query. This only needs to be done once to correct the fault.
see below (2.1 to 2.7)

First:

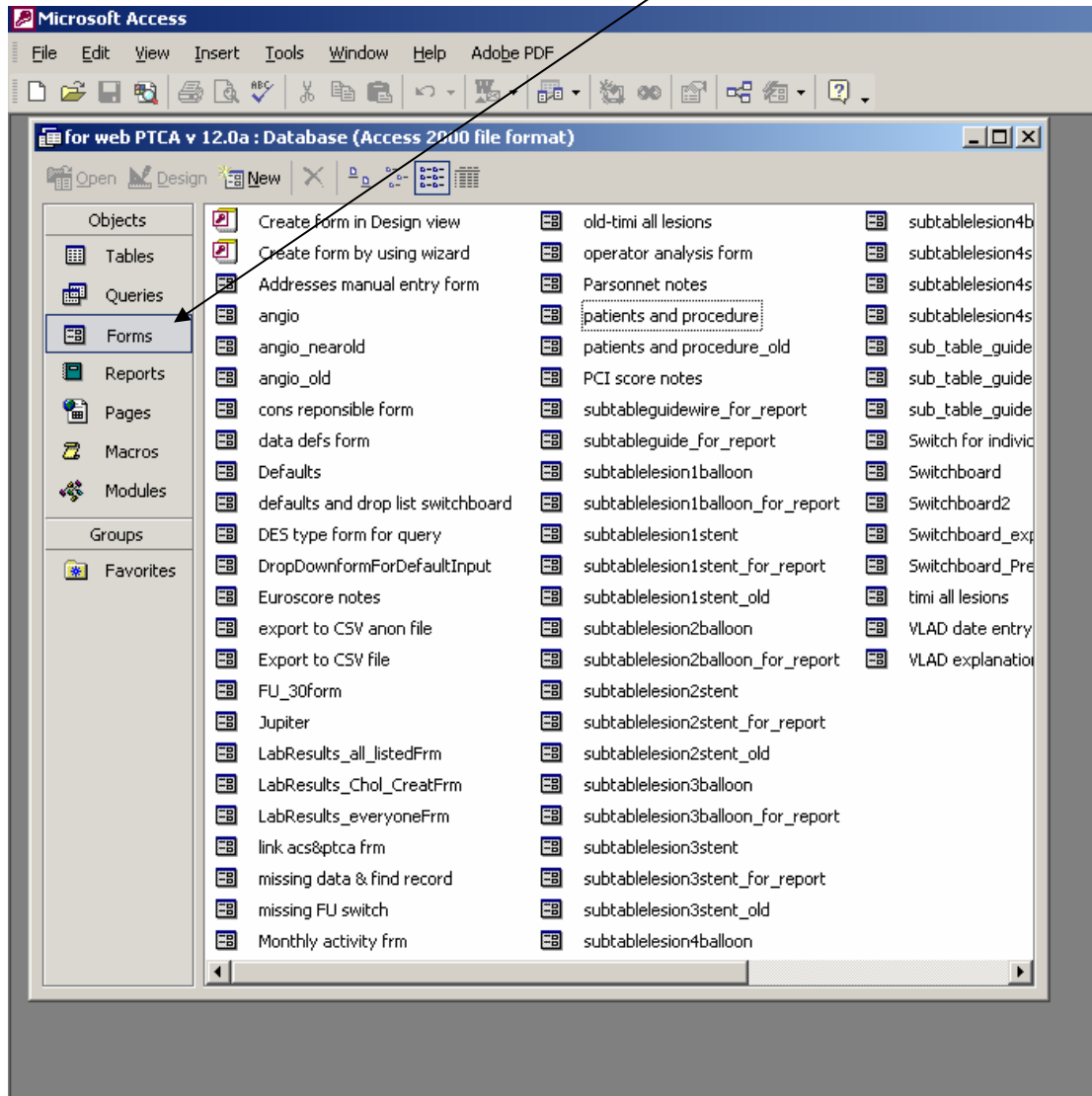
- i) Make a back up of your current database and put it somewhere safe in case anything goes wrong!
- ii) from the web site download the file called '**carcass to update 12.0 to 12.0a.mdb**' and put it somewhere you can easily find it again (I will assume you have put it on your desktop)

Next go through the 2 groups of steps below (1.1 to 1.8 and 2.1 to 2.7):

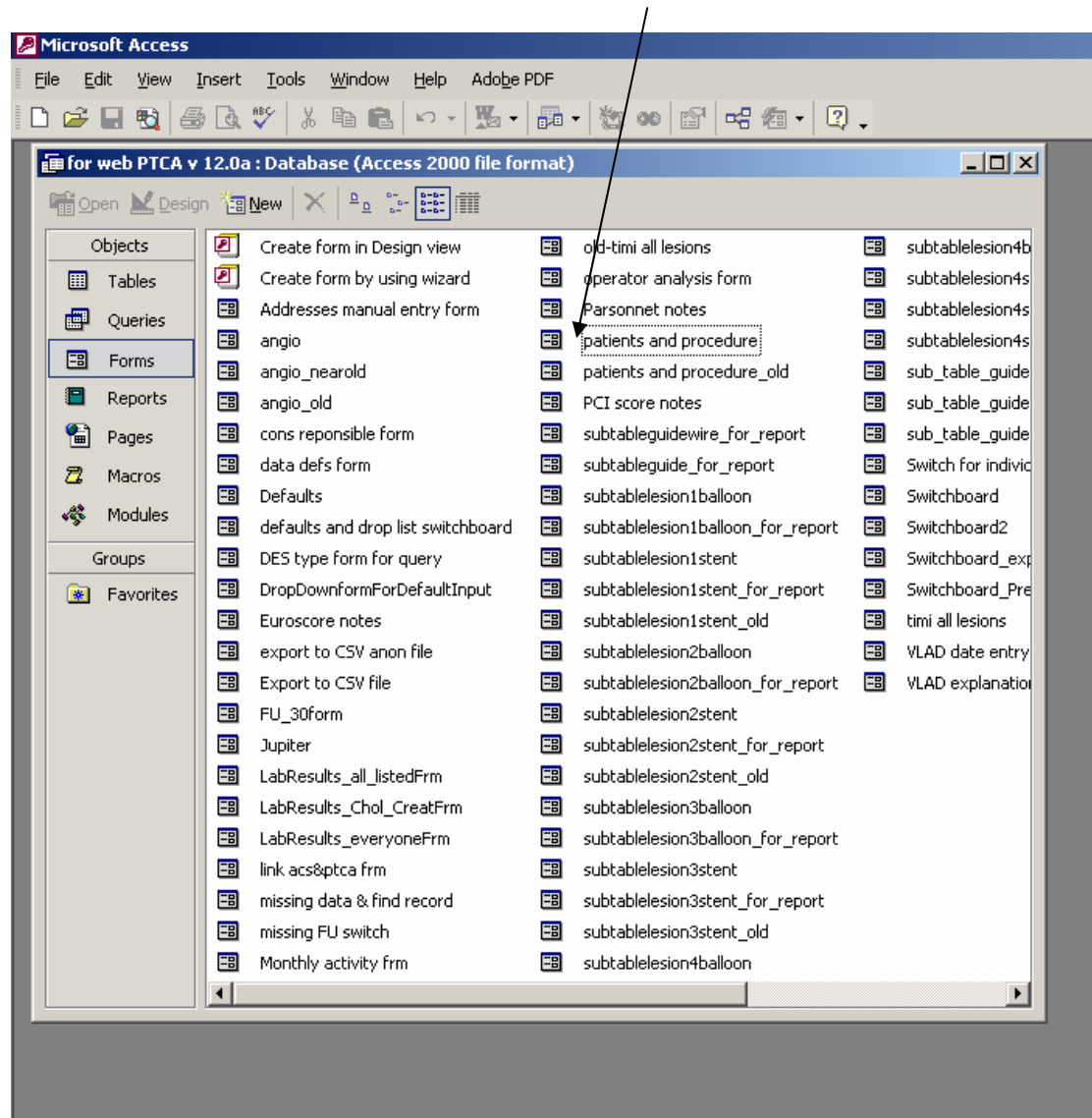
1. How to replace the 'form' called 'patient and procedure' in 12.0 with the one in 12.0a.

1.1 Open your current database by double clicking the icon while HOLDING DOWN the SHIFT key – this will open the database in edit mode

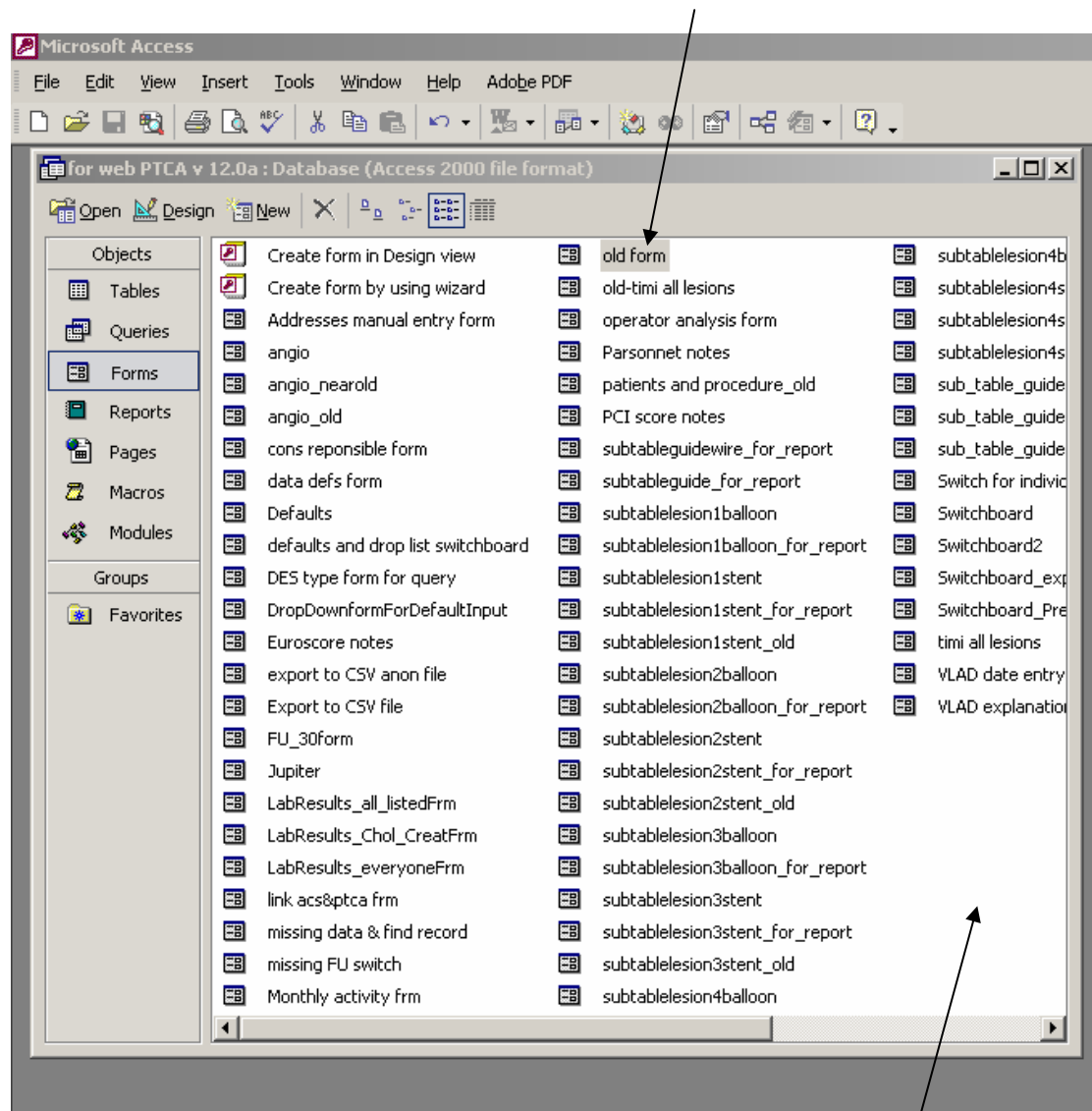
1.2 make sure 'forms' is highlighted by clicking here once



1.3 then RIGHT click the patients and procedure form



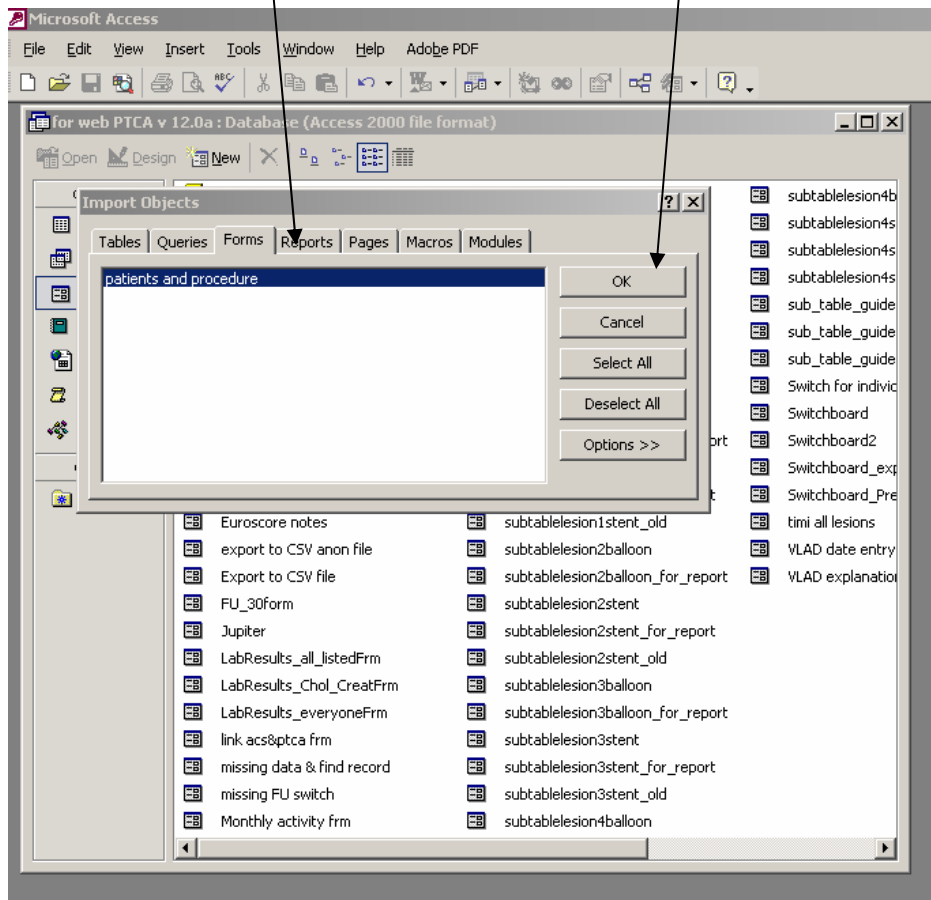
1.4 from the right click menu select 'rename' and call it 'old form'. Sometimes there is a pause at this stage while the database thinks about this, then the screen will change to this, with 'old form' moved in the list to its alphabetical place



1.5 Now you need to import the replacement form. RIGHT click in a blank part of the window and select 'import' from the menu.

1.6 Use the dialog box / browser to select the file called '**carcass to update 12.0 to 12.0a.mdb**' that you downloaded from this web site (I suggested you might put it on your desktop).

1.7 Once you pick this file, the following screen should open, and you will see patients and procedure there. Highlight it (by single clicking) and then click OK



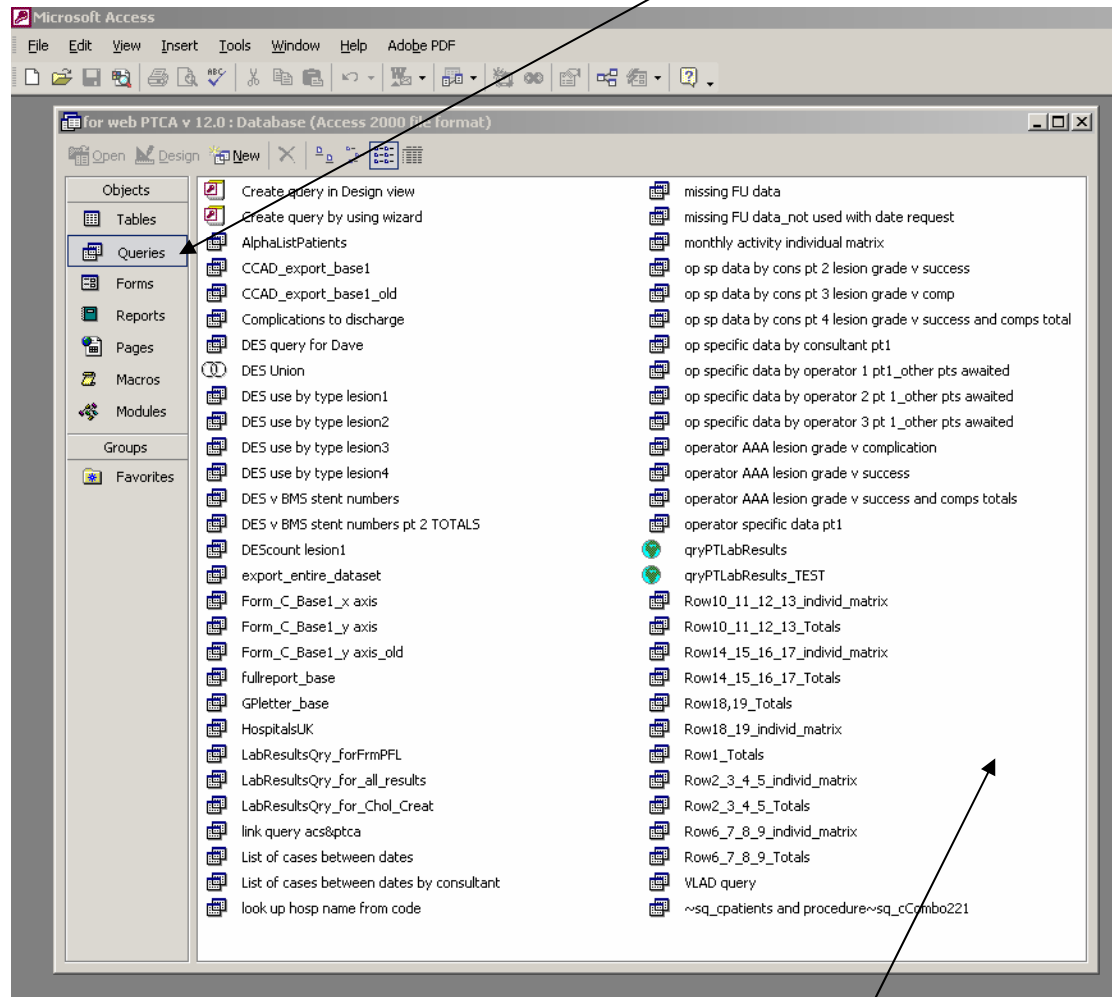
Give it a bit of time, and when it has imported this file, close the database.

1.8 When you reopen the database in the normal way it will now function as before, but with the bug fixed.

2. How to update all the existing procedure records in your database version 12.0

2.1 Open your current database by double clicking the icon while HOLDING DOWN the SHIFT key – this will open the database in edit mode

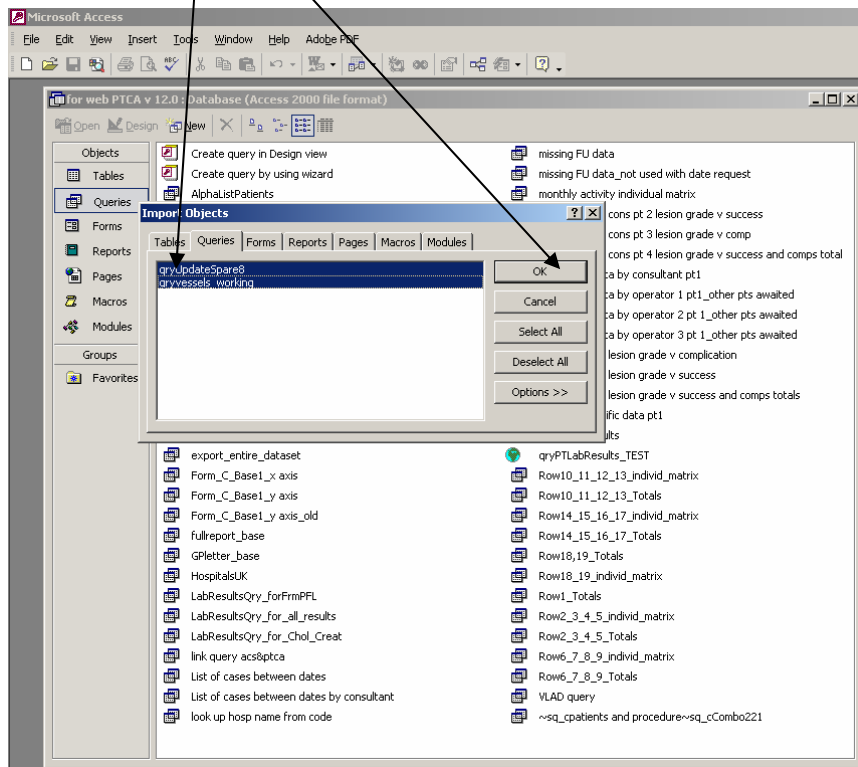
2.2 make sure 'queries' is highlighted by clicking here once



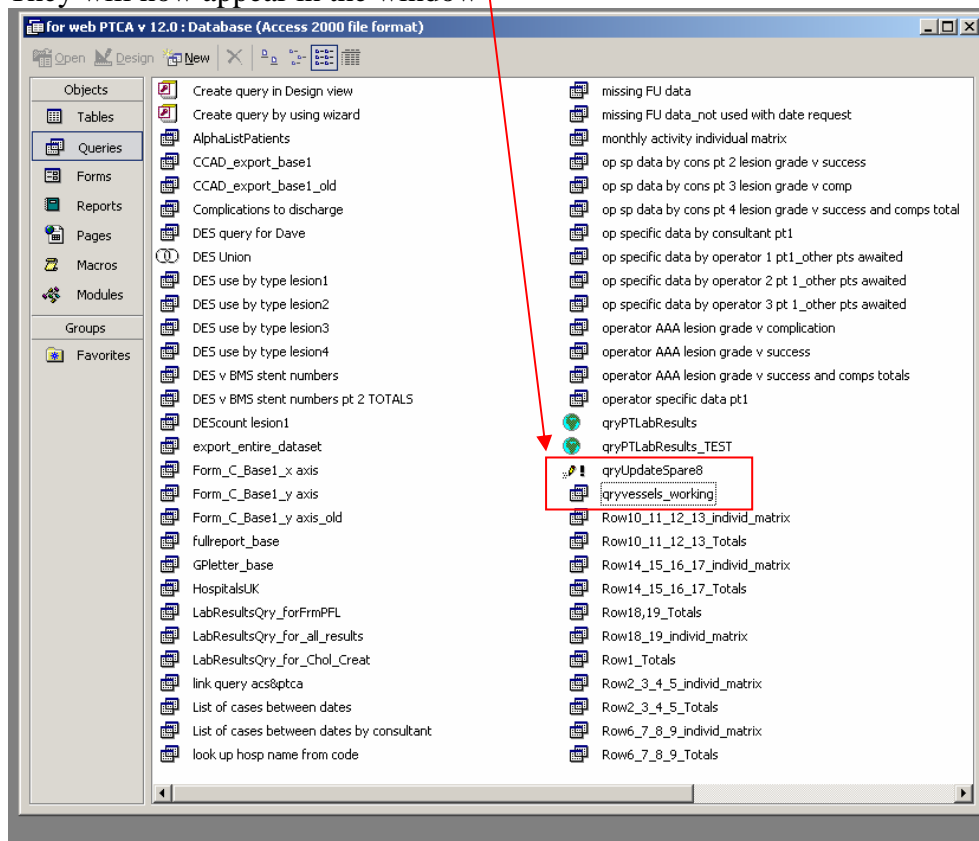
2.3 Now you need to import 2 new queries. RIGHT click in a blank part of the window and select 'import' from the menu.

2.4 Use the dialog box / browser to select the file called '**carcass to update 12.0 to 12.0a.mdb**' that you downloaded from this web site (I suggested you might put it on your desktop).

2.5 Now highlight both the queries (called 'qryvessels_working' and 'qryUpdateSpare8') by holding the shift down and single clicking both. Once both are highlighted click OK to import both of them.

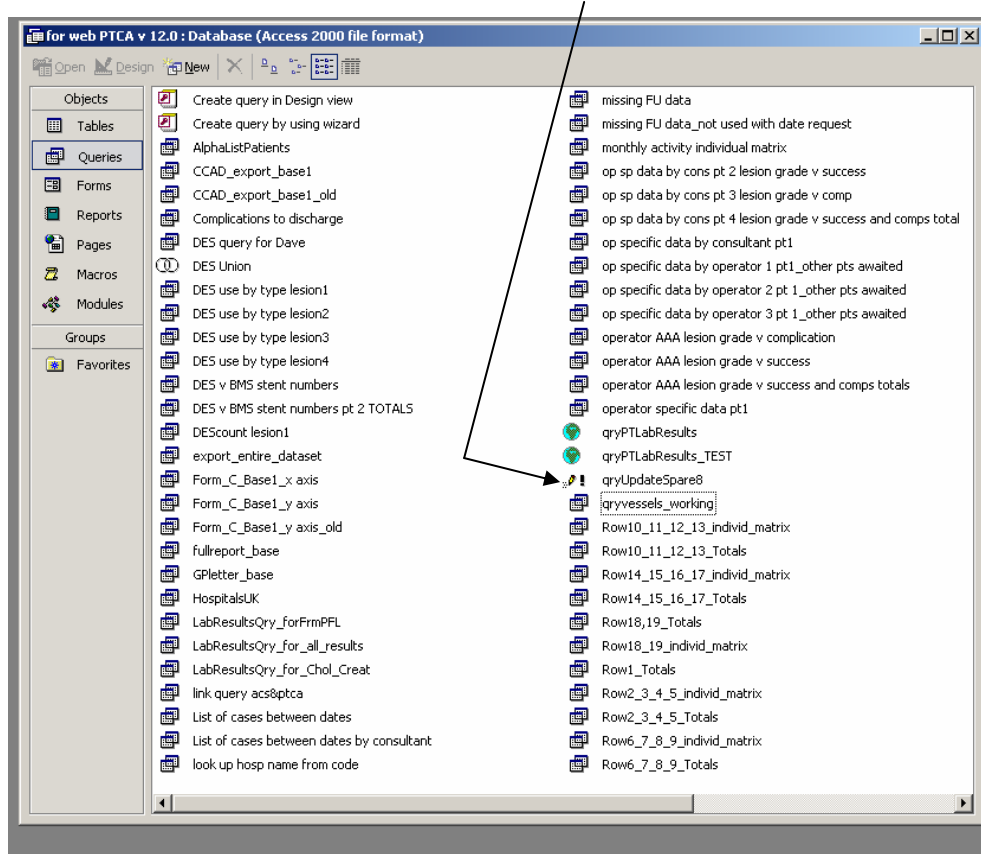


They will now appear in the window

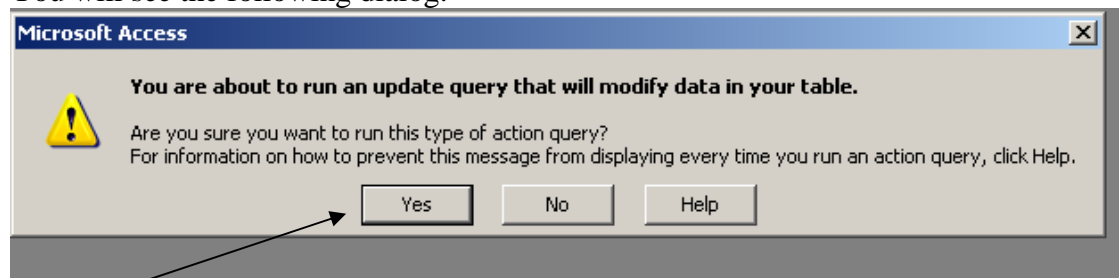


2.6 You now need to run the update query (which is one of the 2 queries you have imported).

Double click the query labelled 'qryUpdateSpare8'



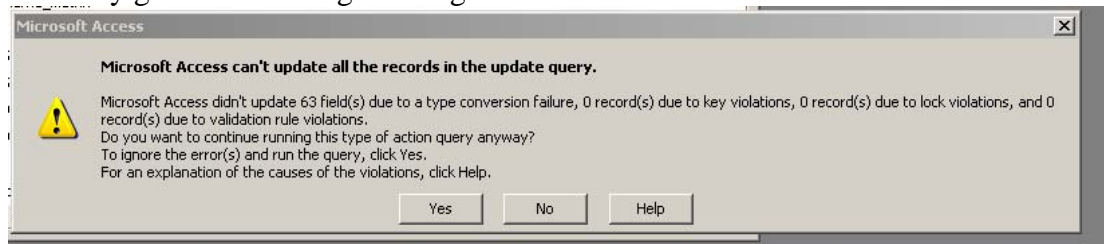
You will see the following dialog:



click Yes

You will then be warned that you about to update a number of records – say “Yes”
The query will run.

You may get the following warning:



This will apply if you have some blank entries in the fields of 'vessels attempted'. Don't worry about it, it will update all that are appropriate – click "Yes"

Your dataset will now be updated.

2.7 Close the database and continue using it as normal

At a later you will need to send a new complete export file to CCAD so that your records are updated there too.